

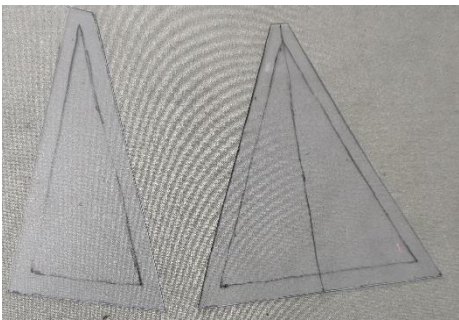
Urban Owls

October 5, 2024



Inner Spikey Border

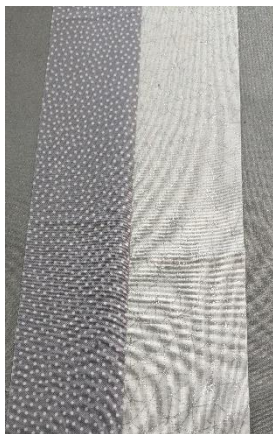
It's time for borders! Yay! These borders are made with templates cut from template plastic. A little bit fussy, but not too hard. Find the templates to trace from your pattern. Trace them onto template plastic and cut out.



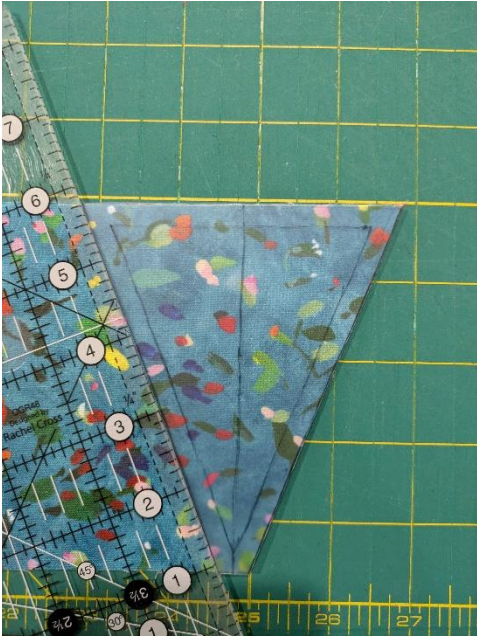
Start with your strips for your pieced background. I am using a metallic white and a grey dot.



Sew the strips together lengthwise and then cut to 4.5" I found that 4.5" was a little too short for me. I would have rather had 4.75" and some wiggle room.



Cut your pieces out of the main print using your template. I have shown below how I line my cutting ruler to the template so I get an accurate cut.



Lay your template on your fabric. Line your acrylic ruler up to the edge of the template where you want to cut. You might have to reposition your fabric so you can cut the angle you need.



Move the template out of the way making sure to keep the ruler in the same spot. Now cut that angle with your rotary cutter. Repeat for all of your pieces.



Line your pieces up in the order they need to be sewn That way you can approve the layout and know where you are in sewing order.



Start sewing your pieces together. You will have to align the pieces so they offset a quarter inch for your seam allowance.



I found that it was a little trial and error. You can see at the top and bottom of my pieces some of the corners hang off the edge. When it is pressed out they will be even.



Ben Franklin® Crafts & Frame Shop

MONROE LOCATION:
19505 Hwy 2, Monroe, WA, 98272
360-794-6745 | www.bfranklincrafts.com

