



Urban Owls

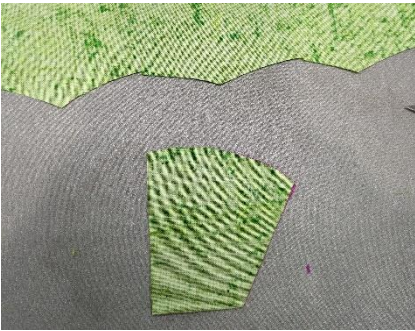
June 1, 2024

Queen of the May

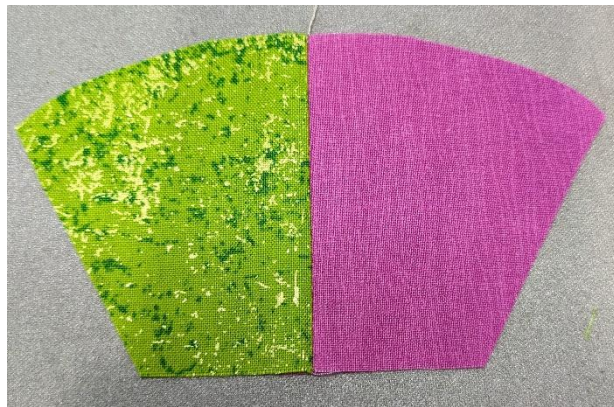
This block was super intimidating to me. In the end, I think it came out fine, and I tweaked her instructions a little bit.

First step is to trace your pieces onto template plastic or cardstock and cut out the templates. Make sure that you are marking the placement dots on the templates. I used my stiletto to poke holes where the dots are so I can transfer the markings to my fabric. These placement points are important.

Once your templates are cut it's time to cut your fabrics. I traced my pieces onto the fabrics and scissor cut. Make sure to transfer the placement points to the fabric. I drew a line from point to point on the fabric to make a seam line. (on the straight side not the angled side) I found that in the tracing of the templates and cutting it increases the size of the pieces. If you use the placement points your seams will be accurate regardless of the template size. Sew on the drawn line from top to bottom.



Press seam to one side.





I drew stitch lines from dot to dot on the center hexagon.

Line up your dots with the previous units. I poked a pin through a hexagon dot and through the corresponding dot on the pieced petal for each side. Once those were lined up, put a pin to keep it together. Stitch on the line from dot to dot.

Press the petals out.



Fold the flap back and pin to keep it out of the way so you can place the next petal. Repeat to go all the way around the hexagon.



Now you can sew the side seams up. Fold your piece in half matching up the placement points and stitching from point to point on each seam.



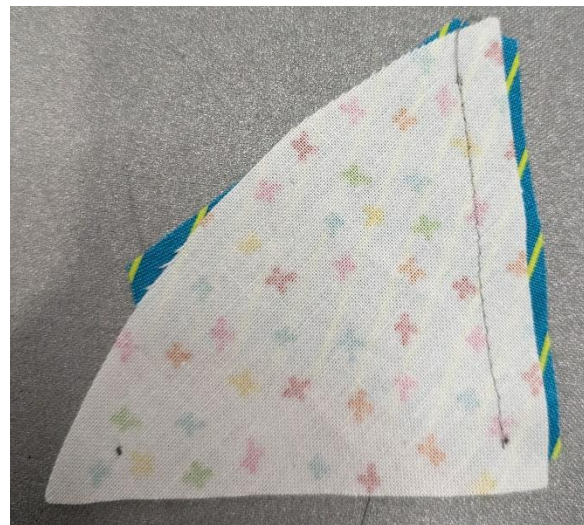
Continue all the way around the center.



Lets move on to the outer ring. Cut your pieces out and transfer the points.



Line the points up. I used the centerish point of my striped fabric piece to line up with the other point of the pie shape. Stitch from point to point.



Continue this process to make a ring matching the placement points alternating pieces.



My center is just placed on top of the outer ring.

Now it's time to sew the two pieces together. Matching the arc points of each ring, pin at each intersection. It will be awkward but your pieces should line up.



Now you can decide if you would like to applique this piece onto your background or piece it to the background. If you would like to piece it, fold your background piece in quarters and cut out the circle using the template. Pin it to the background piece just like the center ring. If you would like to applique it on, tuck your edges under and applique it on.



Ben Franklin[®] Crafts & Frame Shop

MONROE LOCATION:
19505 Hwy 2, Monroe, WA, 98272
360-794-6745 | www.bfranklincrafts.com

