

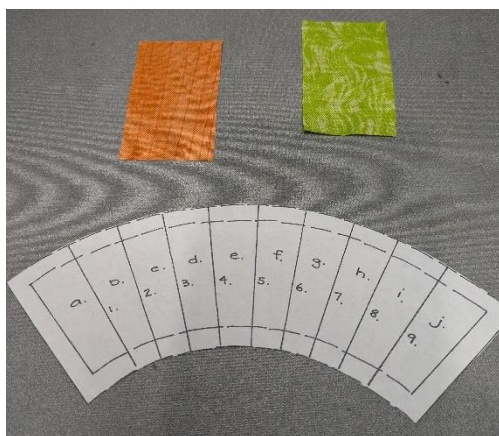
Urban Owls

June 29, 2024



Lets talk Paper Piecing! I was super intimidated by this month. But, I am now a giant fan of foundation paper piecing. It is so precise and so much fun! If you decide that you need some extra help, come see me at Late Night Sew or Finish it Class. We can work through it. Your paper pieces are in the template packets that came with your pattern. I took mine to the copy center and made a couple of copies of each one just in case I messed up. Make sure they are copied at 100%. If you can make an 11" x 17" copy you wont have to tape your larger pieces together. When you paper piece, you are sewing your fabrics to the back side of a pattern in a particular order. The paper pieces have letters and numbers on them. The letters correspond to the pieces of fabric, the numbers are the sewing lines and the order that they get sewn. Cut your paper piecing templates out on the outside dashed line.

There are some helpful notions to have for paper piecing. An Add a Quarter ruler is great. I did not have one with me when I did my blocks and wished I did. A stiff piece of paper (postcard, bookmark) is so helpful. I also use a size 70/10 micro-tex needle.

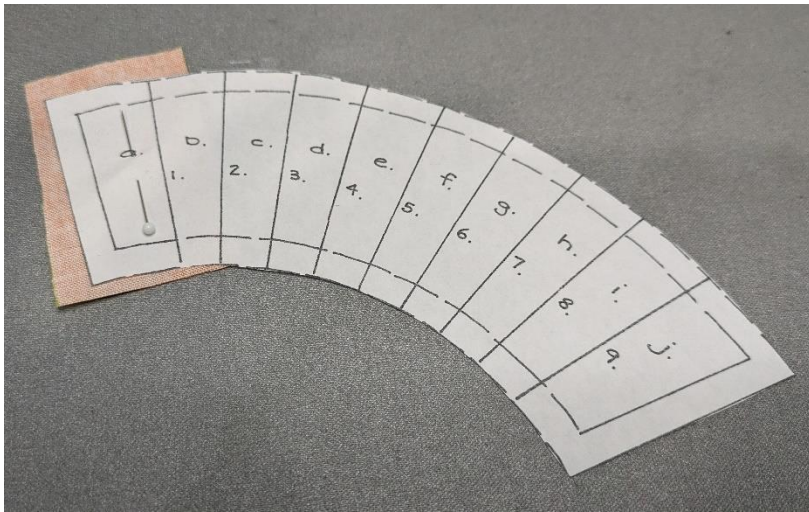


We are starting with the arch from block one.

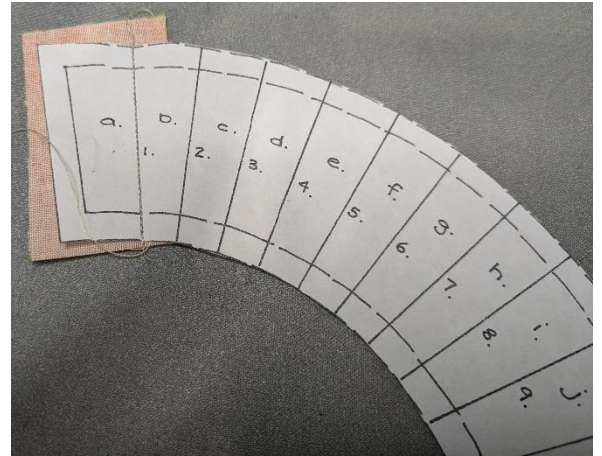
Cut your pieces to the size listed in the pattern.

My arch is going to be two colors. Lime and Orange.

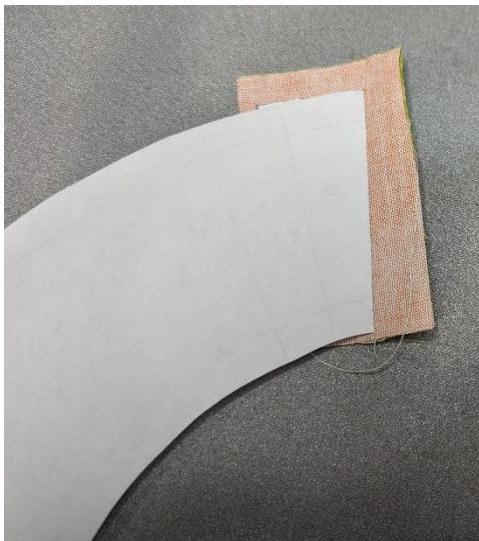
Layer your fabrics right sides together. The fabric that will be in space A needs to be on top.



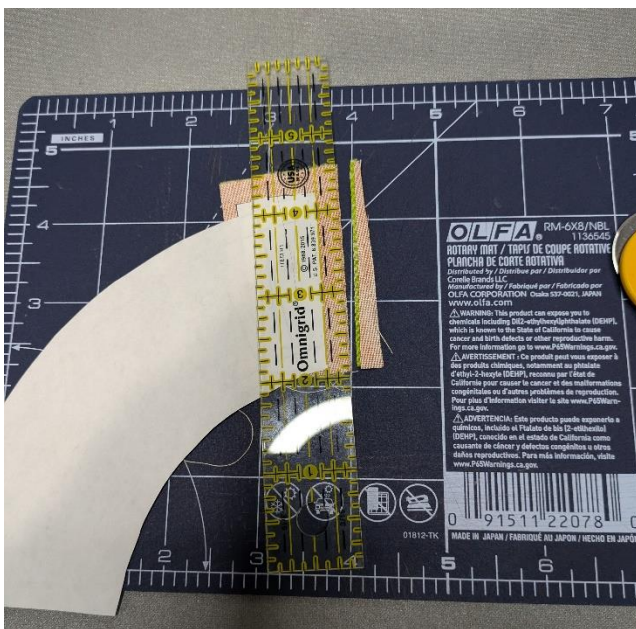
Pin your stacked pieces to the paper template. The backside of my "A" is directly underneath space "A" I have made sure that there is at least 1/4" around all sides of space "A".



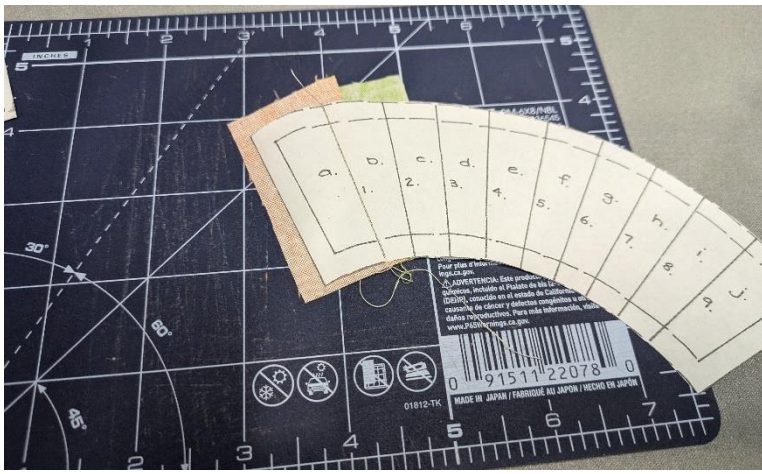
Now, carefully sew directly on line 1. I drop my stitch length to 1.5. for paper piecing.



Fold your paper back on line 1. This is where your postcard comes in handy. I place it next to line 1 and fold the paper back onto the postcard so it makes a nice clean fold.



This is where I wish I had the Add a Quarter. It has a ledge and it butts up to the folded paper and gives you a perfect 1/4" seam allowance. I didn't have mine with me so I lined up my 1/4" and trimmed.



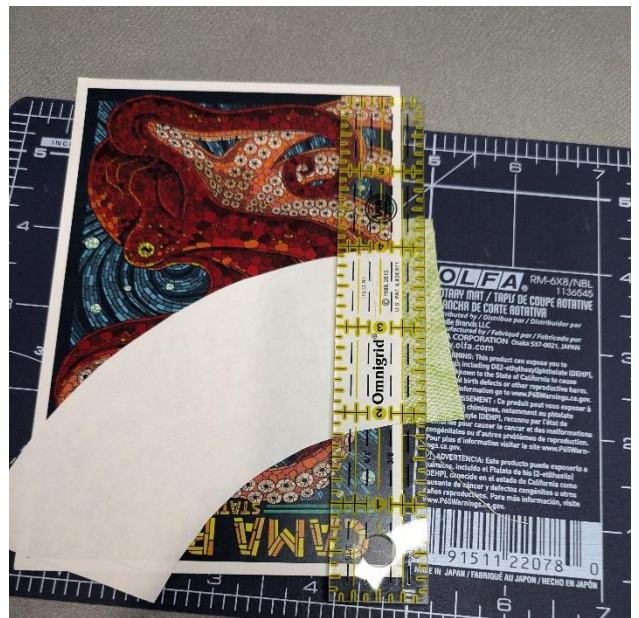
Press your fabric 2 out and turn back to the paper side. You can see my green fabric is now covering the section "B". Now its time to trim that line 2 edge.

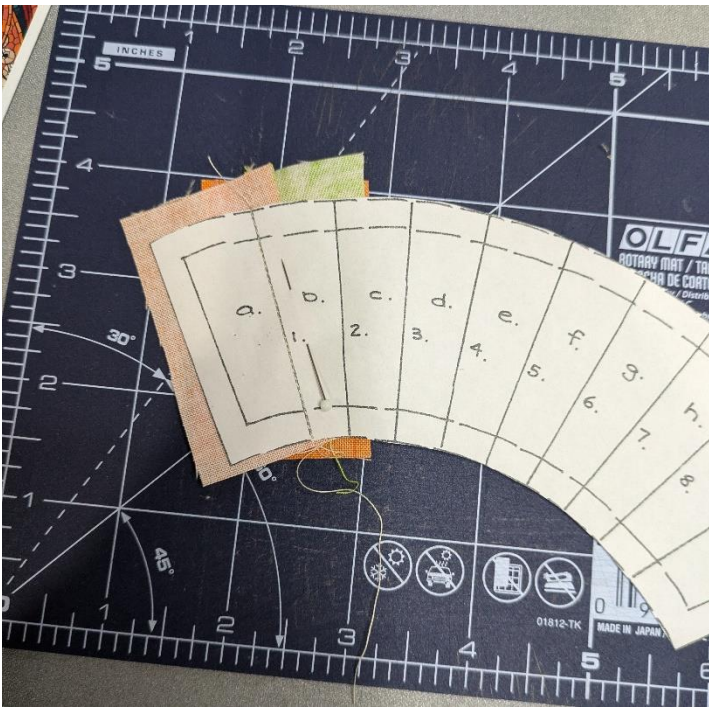


I placed my postcard on line two so I can easily fold the paper back.



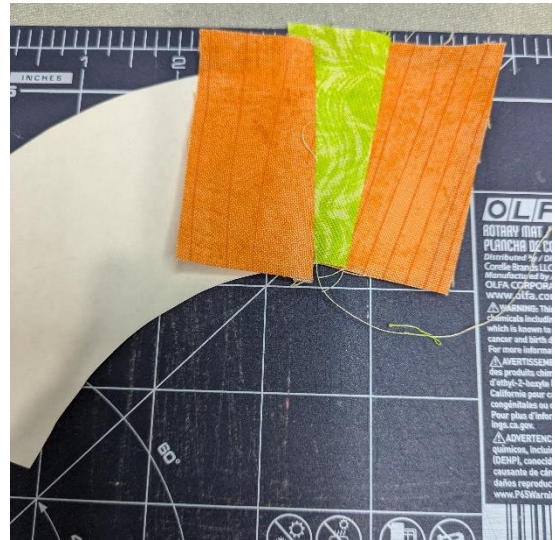
I placed my ruler with the 1/4" line on my folded paper to give me a 1/4" seam allowance and trimmed that extra fabric off.





I put another orange piece right sides together with my green "B" piece. The orange fabric is lined up with my trimmed green side and at least ¼" clearance around all of the edges.

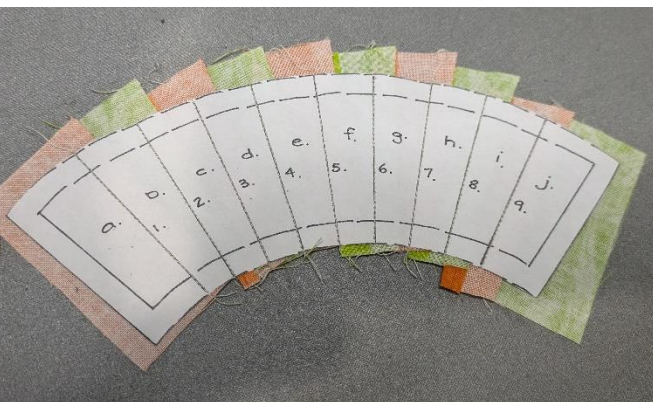
Sew on line two, turn your piece over and press



Trim piece "C" just like you did for piece "B"
Keep going around your arch.



Trim with scissors around your paper. Leave the paper on until it is time to connect it to another piece.

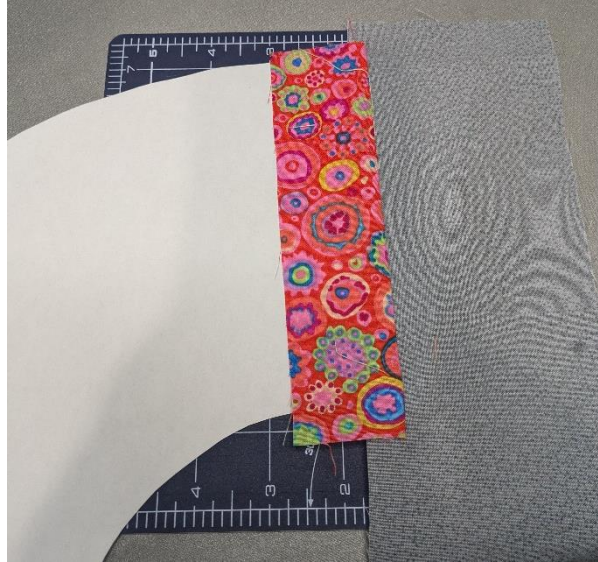


Ok, all of the other pieces are done with the same process. Let's do the spikey section of block 2 next.



Here are my fabrics layered together.

I placed them under my paper, sewed on line one and flipped it over to press.



My Grey is fabric "A". The circle fabric is "B". I am ready to trim this. I am going to fold on line 1 and trim.



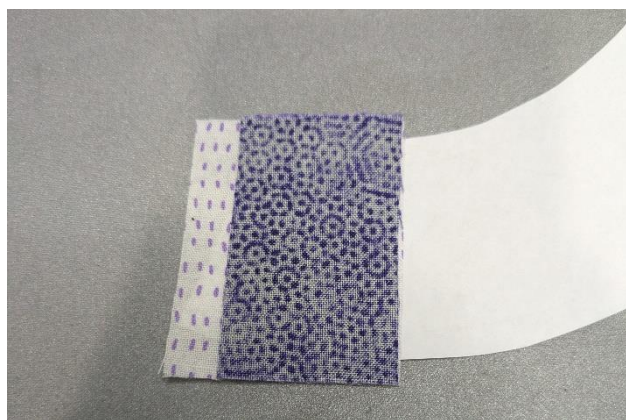
Do you see my problem? I trimmed with the fabric folded flat instead of trimming just the seam allowance on the first piece I trimmed fabric "B" right off! Luckily I could seam rip and start over.



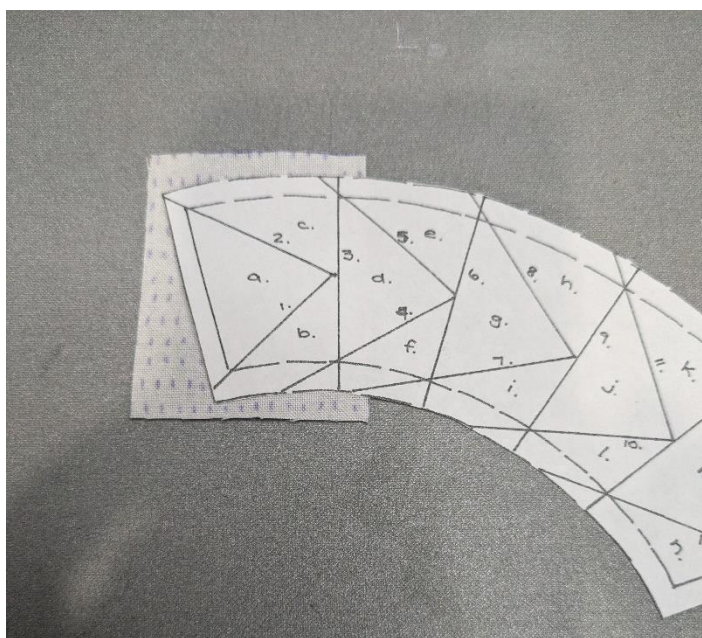
Here is my spikey section. I followed the process- pin, stitch, press, fold and cut.



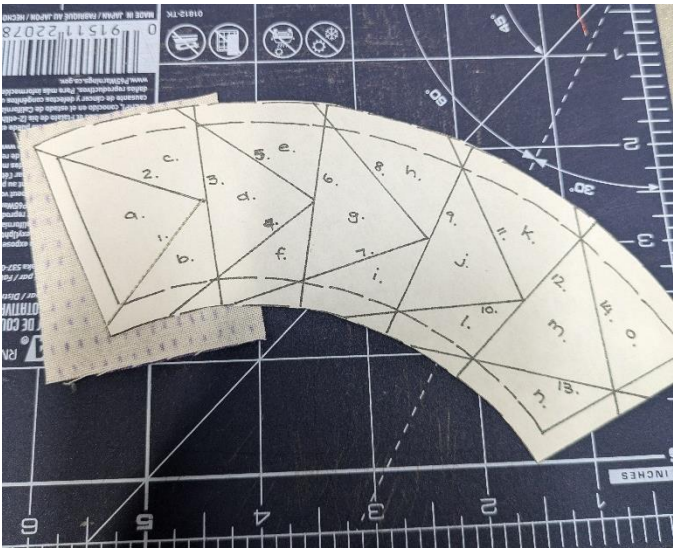
Now lets work on the flying geese in block 3.



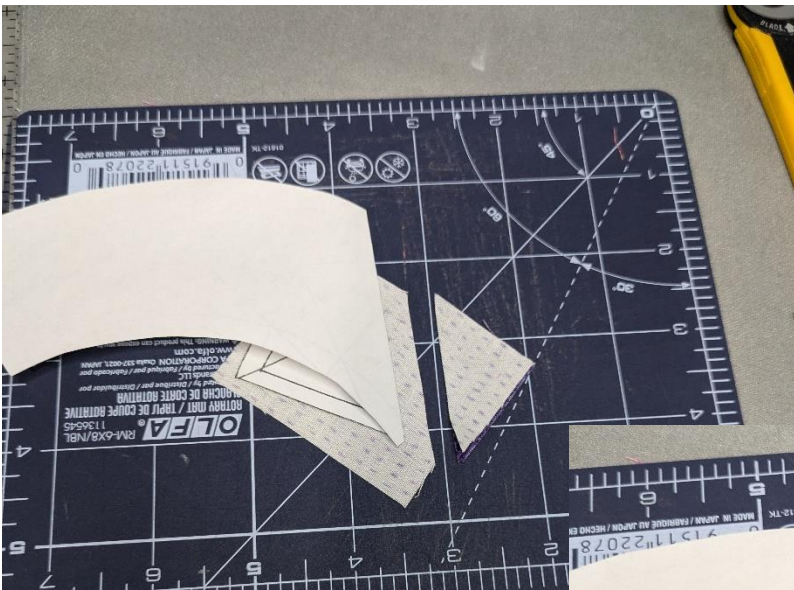
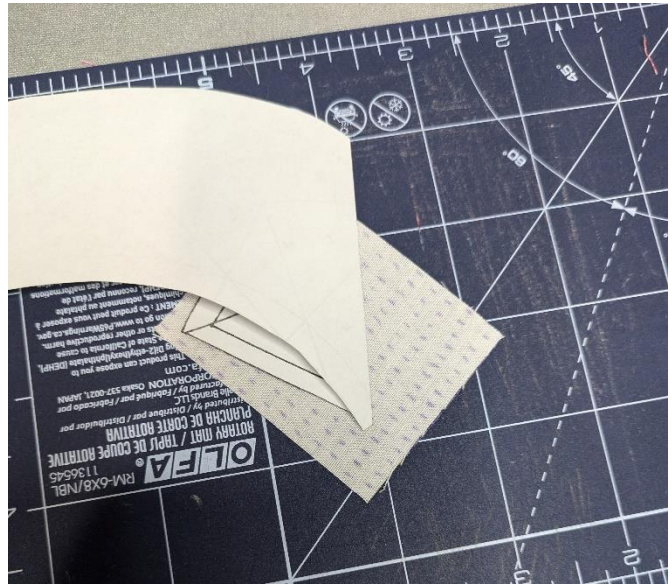
Ok, fabric "A" is the dashed fabric. Fabrics "B" and "C" are the purple. You can see on your paper piece that you are sewing the geese sides on first. So pictured is the opposite side of where I am going to sew. The dash fabric is covering section "A" and the purple is covering section "B".

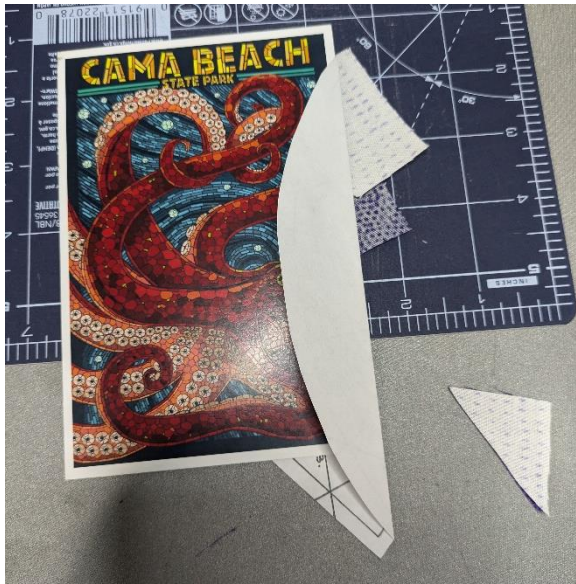


Here is the flipped version of that. I am getting ready to sew on line 1.

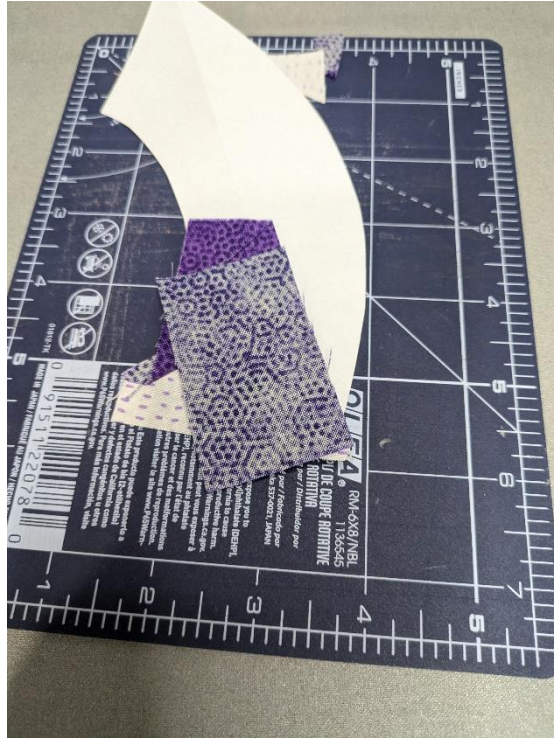


Ok, line 1 is sewn. The process is the same. Its time to fold and trim.





Now I am trimming the seam allowance on line 2. So I can line my fabric up against the trimmed side. Making sure there is at least $\frac{1}{4}$ " outside of the section lines.



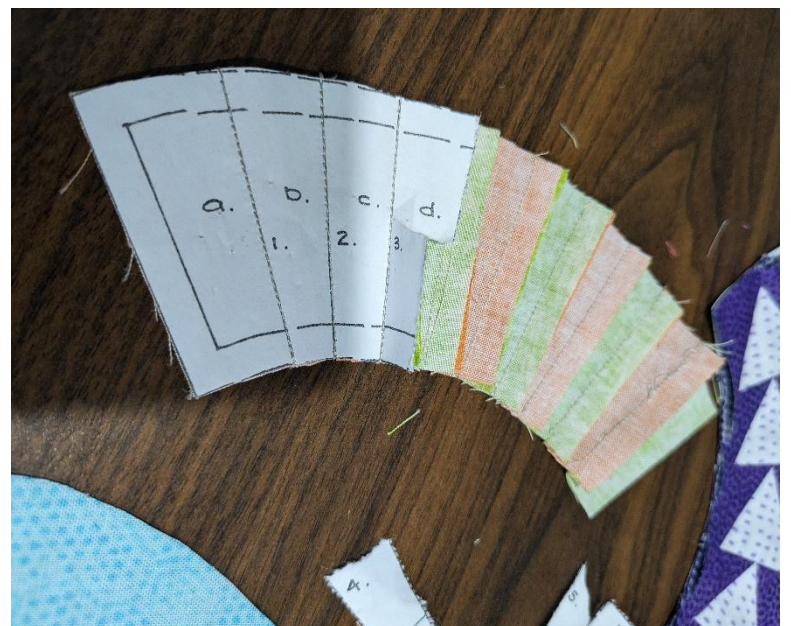
After it is sewn fold the paper back and trim the seam allowance. Repeat the steps until all of your geese are done.

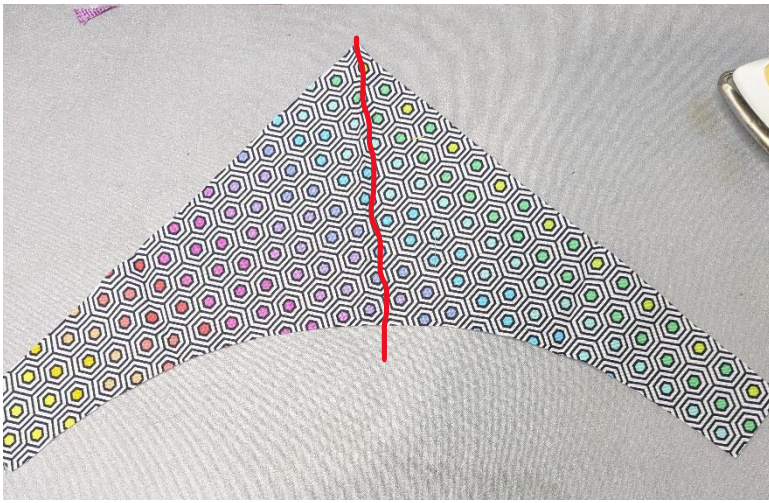




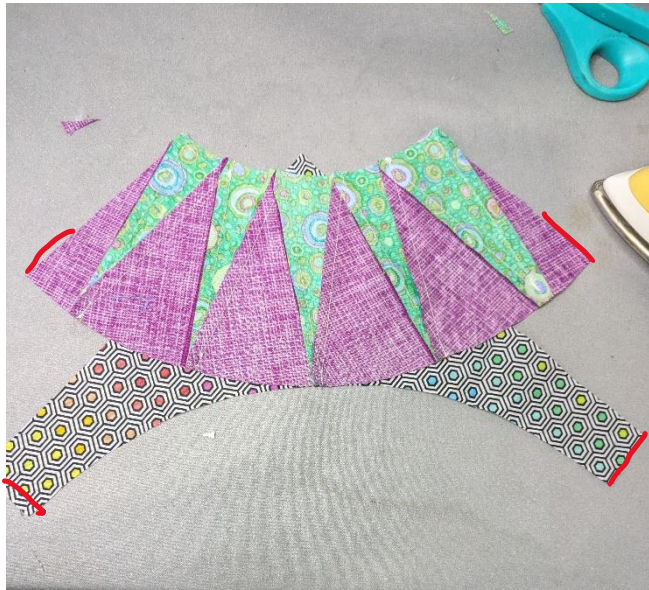
Get your sections done and then decide on your backgrounds and center circles. Trace each out of the templates on the pattern pages.

Now that we are getting ready to sew the arches to the backgrounds you can take the paper off the back. I found the best way was to tear the paper in half horizontally and then peel towards the edges. That way the seams stayed secured at the ends.





Here is a background for one of my blocks. I folded it in half so there is a crease from point of the corner to the center of the circle.



I folded my arch the same way to find the center. I matched the centers up right sides together. I know they look crazy but it will work.

Pin at the center crease.

Now fold the legs so they match with the ends of the arch and pin. I marked in red the parts that match up.



I don't pin any more. I like to ease my fabrics together as I sew straightening the curve as it gets close to my presser foot.



Repeat this process for the centers and backgrounds of each block



Quilter's
Corner
MONROE, WA

Ben Franklin® Crafts & Frame Shop

MONROE LOCATION:
19505 Hwy 2, Monroe, WA, 98272
360-794-6745 | www.bfranklincrafts.com

