



Urban Owls

August 3, 2024

Corner Star

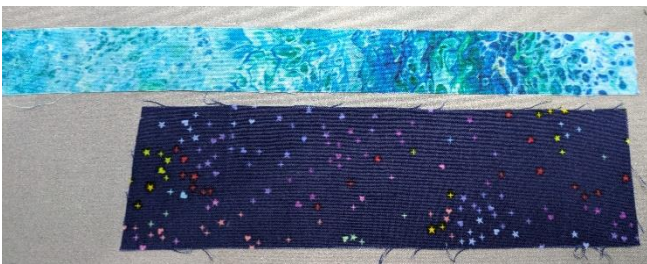
We are paper piecing the corner star blocks this month! Super Fun! I suggest making copies of your paper template pieces just in case you make a mistake. I know you probably won't make a mistake, but you never know! If you make copies, you can make the blocks again too. The method is exactly the same as last month's paper piecing. Remember to shorten your stitch length and pop in a thin needle.

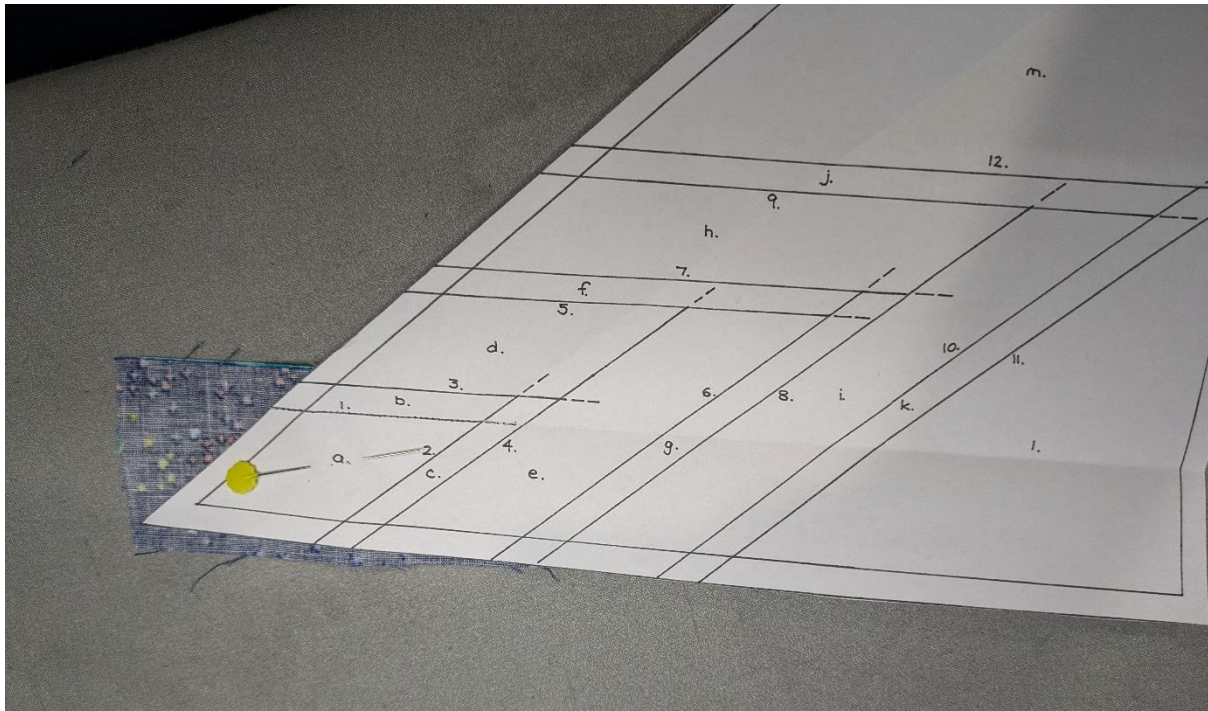
Step 1

Cut out your template pieces on the outer black line. I would then choose your fabrics for each space. There are 3 star fabrics in each section and one sashing color that runs through each block....You can make yours as planned or scrappy as you want....you don't have to stick to those rules 😊 Each section also has 2 backgrounds.

Step 2

These are my fabrics for piece A and my sashing. Remember that the placement spaces are lettered and the sew lines are numbered in order. Place your sashing fabric and space A fabric right sides together with one side long side even. This side will be where you place your paper.





My paper is lined up with sew line 1 at least $\frac{1}{4}$ " away from the edge of both fabrics. Sew on line one. Press your sashing fabric out



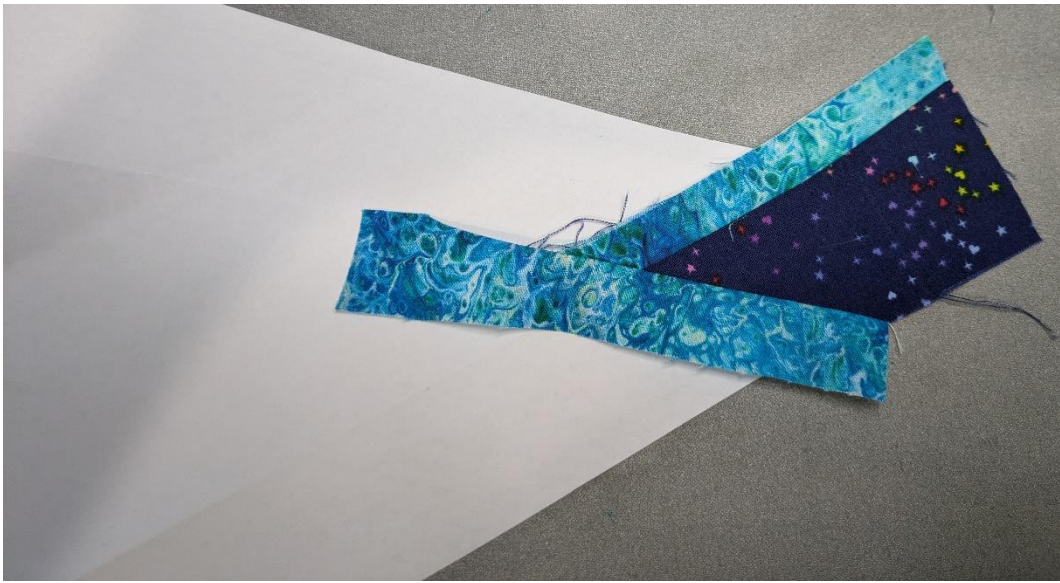
Fold your paper on line 2 and trim $\frac{1}{4}$ " away from the fold.

Flip your paper over so you can place fabric C lined up with the cut edge.

Pin in place with a flathead pin.

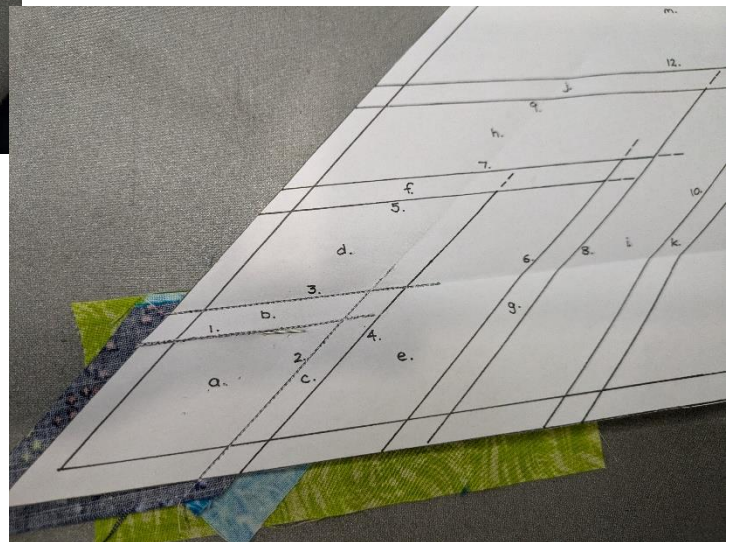


Sew on line 2 extending your stitches to the dashed lines. Press your second sashing out.



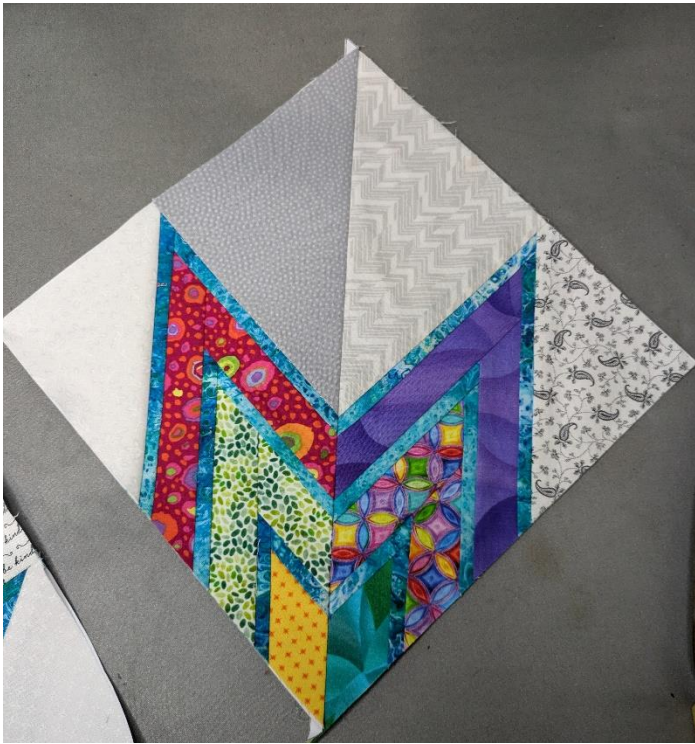
Step 3

Continue folding, trimming, stitching, pressing through each section of the paper piece



Keep going in the same method for the rest of the section. Trim to the outside black line of the paper.



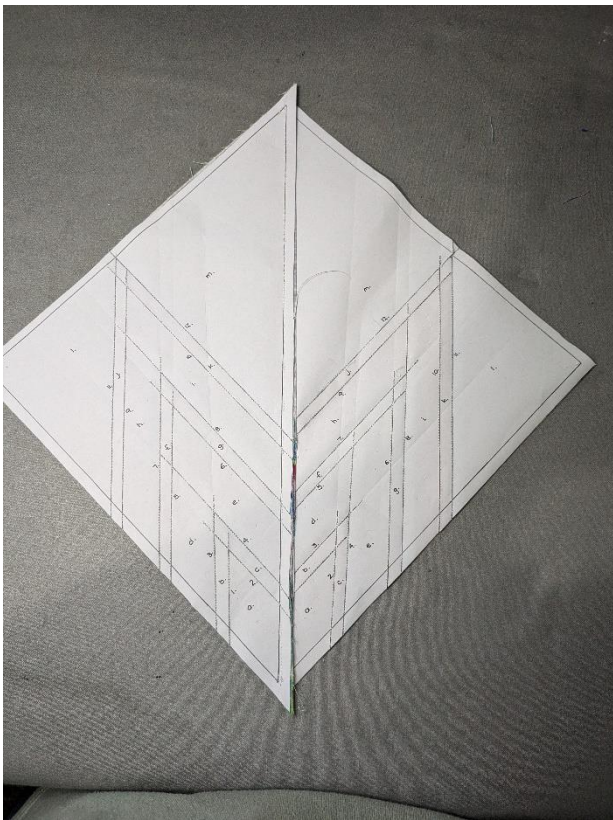


Sew two sections together to make a block.
Repeat for all three blocks.

The sections will fit together pretty perfectly. I made sure that the corner points were lined up and pinned together.



off



I kept the papers on and will take them when I am assembling the quilt.



Quilter's
Corner
MONROE, WA

Ben Franklin® Crafts & Frame Shop

MONROE LOCATION:
19505 Hwy 2, Monroe, WA, 98272
360-794-6745 | www.bfranklincrafts.com

