



Bridle Path

September 6, 2024

Pinwheels

I know you probably said pinwheels...yay..but these pinwheels have a little extra 😊. There is a sew and flip corner on each half square to make a cute diamond center. On your pattern she says to use the (21) squares to make the blocks...you only cut 20. We are using the make 8 at a time method of making half square triangles. I suggest shortening your stitch length to about 2 for this block.

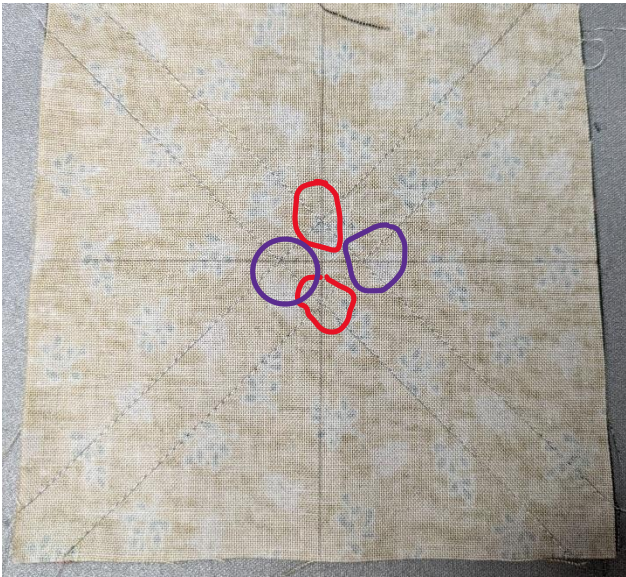


Start with a square of two different fabrics.



Using your 1/2" wide ruler draw sew lines from corner to corner. Line the center of the ruler up on each corner and draw 1/4 inch from the center on each side. Make an X with your sewing lines. Sew on the drawn lines.



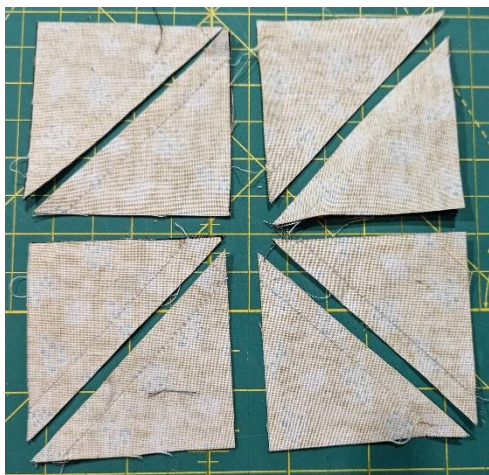


Draw a vertical and horizontal line on your square. I just lined my ruler up where the stitching came together and drew a line. (Marked on the pic).

Cut on the drawn line



Now cut the $\frac{1}{2}$ squares apart



Press towards the dark.

Trim.



Make sure that all of your half squares are oriented the same direction. The diagonal is the same way and the fabric colors are the same direction. Draw a diagonal line on the back of each of the red squares. Place the red square on a corner of your half square. Make sure that they are in the same corner for each half square.



Sew on the line. I sew just a thread width towards the corner especially on something that is this small. The thread takes up space.



Press. Flatter or best press works great here

Sew two together and press your seams open. Sew those two to another set of two and press those seams open.





Now make 39 more!



Quilter's
Corner
MONROE, WA

Ben Franklin® Crafts & Frame Shop

MONROE LOCATION:
19505 Hwy 2, Monroe, WA, 98272
360-794-6745 | www.bfranklincrafts.com

