

2023 Ben Franklin Saturday Sampler

Color Collage Tutorial- January



Welcome to our 2023 Saturday Sampler. I am excited to share this quilt with you. I love the pattern and the fabrics. If you are using your own fabrics I am super excited to see your choices as we work through the quilt.

Let's jump right in!

Suggested supplies for this quilt are below. I never recommend anything that I do not personally use (I will tell you if I use it or not and why) All of these supplies are available at the store.

A spray starch product. They recommend Best Press. I use that as well as Flatter. (I usually mix the unscented Best Press with a delicious scented Flatter. You get the best parts of both of them.)

A marking tool- A Frixion pen or silver pencil are recommended. I use a variety of things. I love the Sew Line trio pencil (it has white/pink/and graphite and refillable) I also use a regular mechanical pencil, a white chalk pencil and the clover chaco-liner pen. (it is refillable loose chalk in a wheel pen). If you have a preferred marking tool use it.

Bias Press Bars are used for the applique. We can chat about that later along with the other applique supplies. There will be an option to purchase laser cut pre-fused applique pieces if you are using these fabrics.

Let's talk rulers...There are a few rulers I use more than others. You will see these in my pics throughout the quilt. I love the Creative Grids 4.5" x 8.5" and the 4.5" x 12.5" those are the ones I use the most. My other favorite is the Omnigridd marking ruler trio. They are a group of 3 rulers .5" wide and 4", 6" and 12" long. I use them for checking seam allowance, and marking diagonal lines on my pieces. They are just a handy straightedge to have close by.

Thread: Use what you love. I think we all have a preferred thread. I love Aurifil in a medium grey. It is strong and thin and works great in my machine.

Needles: I use a microtex sharp needle usually size 80/12. If you prefer something else it will be just fine.

This pattern is written by Nancy Rink. We have done a few of her Block of the Month programs previously and have been really happy with the patterns. She does very precise piecing. If you are like me and like to cut bigger so you can trim to size, that is not her designing style. I will give you ways to cut a little bigger so you can trim to size with each month when possible. If you are a precise quilter and feel like you can quilt to the exact size please use her cutting instructions as written. My blocks turned out just fine but I really had to concentrate on my piecing. I do not include cutting instructions in these tutorials. They are designed to work with the pattern you

have as additional instruction. We ask that you do not share your pattern or the tutorial with anyone not in this class. There is a lot that goes into pattern design and printing and we want everyone in that process to get the recognition and support they deserve.

Fabric: We have kits available for this quilt in the colors shown. If you would like to use your own fabrics or purchase your own fabric for this project we would love to help you with your color choices and placement. Email me at fabric@bfranklincrafts.com and we can arrange a time to design. If you are choosing your own fabrics I suggest taking a cutting of each one and taping it to the swatch chart in the book. It makes cutting each block so much easier. Pre-wash or not? That is totally up to you. I do not pre-wash but don't recommend one way or the other, it is personal preference. We keep the fabrics in the kits in the store for at least the duration of the program. If you would like an oops kit (1/8th yd of each fabric) let us know. We can get one ready for you. If you would like to use one of these fabrics as a backing let us know as soon as possible so we can order it in. There will be a 108" in the fabric line available also...pre-orders are appreciated.



If you would like to cut pieces a little bit bigger for squaring up change the following:

Increase 8 of the 2 3/4" peacock solid squares to 3" and the 8 lime dappled 2 3/4" squares to 3"

Step 1



I used a scant 1/4" seam for the entire quilt. If you are not sure if you are getting a 1/4" seam, sew some test pieces and measure with a ruler. Remember that thread takes up space and if you sew a scant 1/4" you will usually end up with the correct finished size.

Sew a Peacock solid strip and a Blue Framing strip together lengthwise. This is a great opportunity to check your seam allowance. I placed the



center line of my ruler directly on my seam. The edge of the ruler is right on the fabric edge which is perfect



Step 2



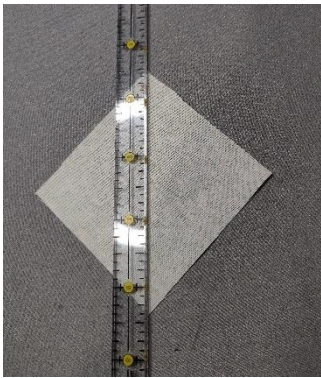
This is my pressing process. I mix the Best Press and Flatter in a mister bottle. This gives a light continuous spray and is not too wet on my fabric.



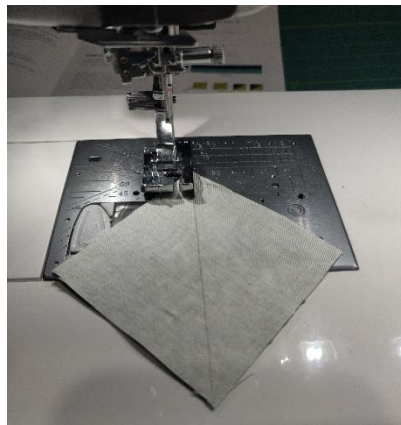
Press towards the blue fabric.

Subcut these strips as directed in the pattern. You will cut 16 pieces.

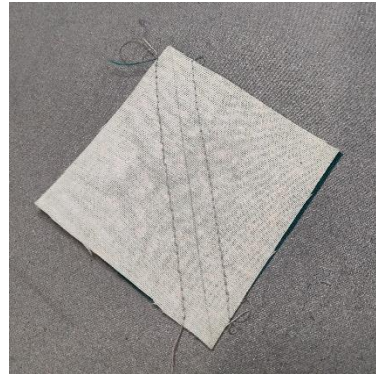
Step 3



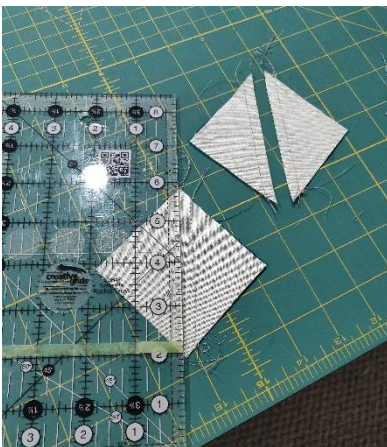
Draw a diagonal line from corner to corner on the backside of Lime Dappled (C) square.



Match this with a corresponding peacock solid square and sew 1/4" on each side of the line. I use a foot with a 1/4" guide. I line my guide up on the drawn line and sew. Flip it around and sew 1/4" on the other side of the line.

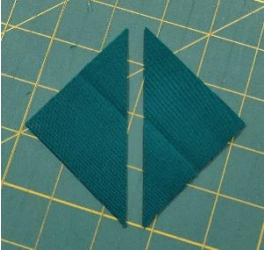


😊 Don't judge that stitch line my tension was off. 😊 I re-threaded my bobbin and all was good!

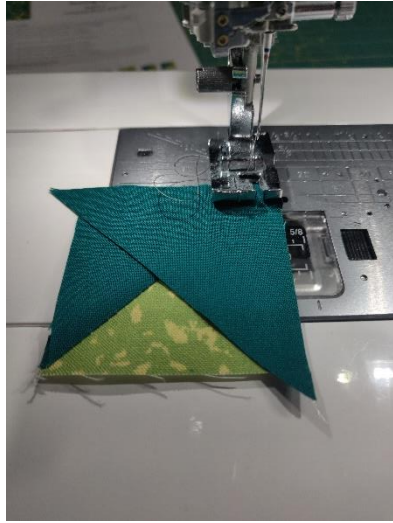


Cut on the line and press to the dark side. Trim to the size in your pattern.

Step 4



Cut the remaining peacock squares diagonally and matching the orientation in your pattern sew a triangle to your half squares from step 3.



When you are sewing your triangle to your half squares, line the right angle of the triangle up with the corner of the square. Start your sewing from this point so your machine does not suck your fabric into the needle hole.

After sewing this seam, press towards the square. Repeat these steps for the other side the half square making sure the orientation is correct Press away from the square on this side.

This is what you will end up with.



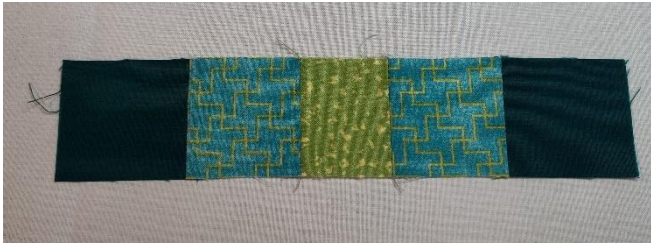
Step 5

Match with a Green Shrub triangle and sew on the long side. I like to sew with the pieced side up so I can see the stitch lines. You want to sew just towards the edge of the fabric when the stitches intersect.



Press towards the green shrub triangle. When you press your seam the point of your inner triangle should just meet the center seam of your block.

Step 6



Sew 2 of your pieces from step 2 to the line dappled A squares. Pay attention to the orientation of colors. Press away from the center

Step 7



Sew the remaining step 2 pieces to B of the half square blocks. Make sure the triangles are facing towards the center (Don't ask me how I know this 😊) Press towards the center

Step 8

Sew a square to the other side of that piece pressing towards the center again.



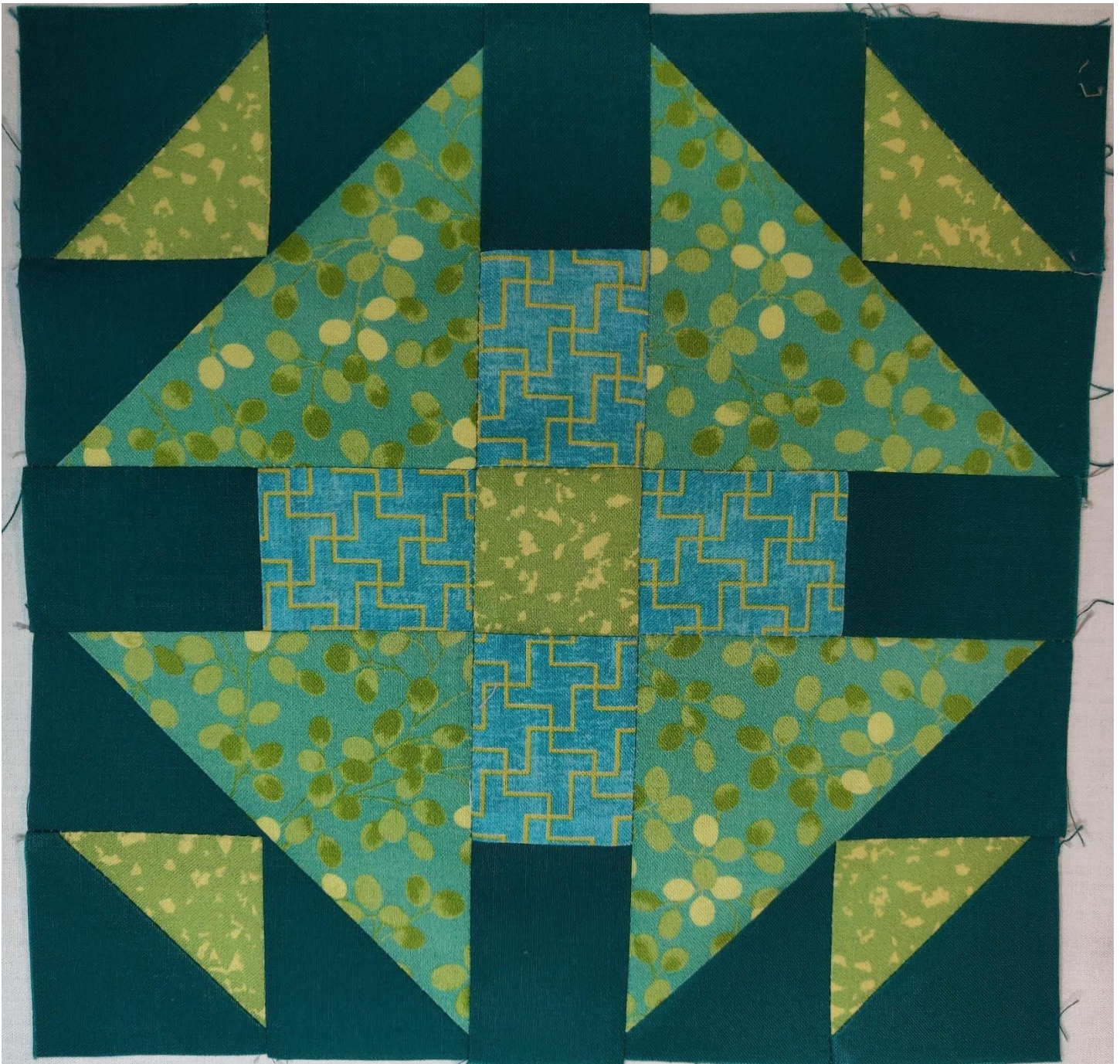
Step 9



Line up a strip from Step 6 right sides facing on the previous piece. Because you pressed as specified, the seams will nestle together and fit perfectly. If they don't you may be able to fudge it a bit so they do. I put a pin at these points to keep everything tidy. Sew this seam and press towards the center

Step 10

Repeat for the other side and press towards the center. Yay! You are done! (now k



Ben Franklin[®] *Crafts* & Frame Shop

MONROE LOCATION:
19505 Hwy 2, Monroe, WA, 98272
360-794-6745 | www.bfranklincrafts.com



